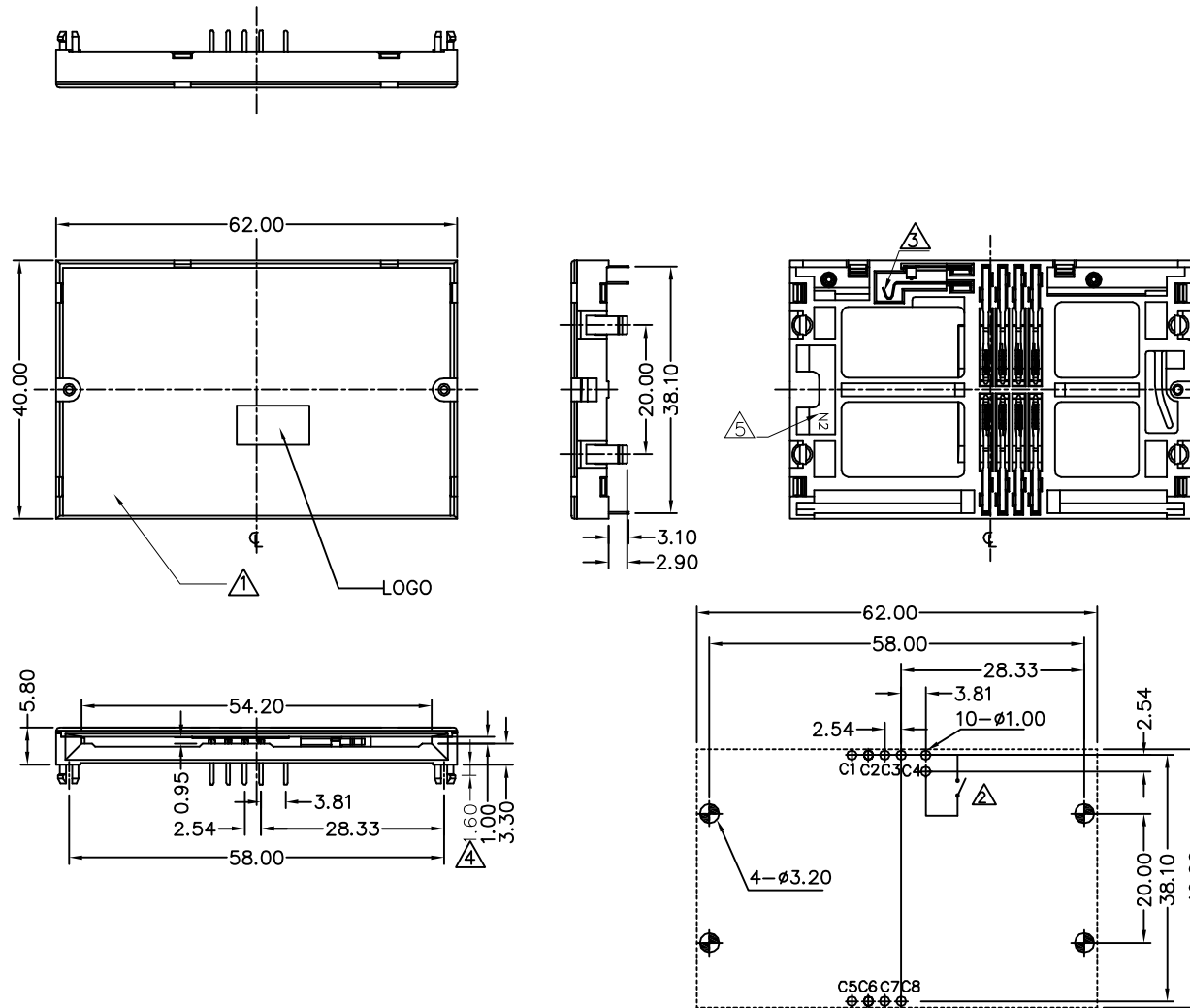


Specifications:

1. General Information
 - . Contact Principle: Friction Technology
 - . Mounting Type: Dip Type
 - . Switch: Blade Contact, Normal Open
 - . Durability: Insert And Withdraw Card For 300,000 Cycles At Max. Rate Of 600 Cycles Per Hours
 - . Material:
 - Data Contact: Copper Alloy
 - Insulator: Thermoplastic, UL94V-0
 - . Plating:
 - Gold Plated On Contact Area
 - Tin Plated On Terminal Area
2. Electrical Specification
 - . Contact Resistance: 50 Milliohms Max.
 - . Insulation Resistance: 1000 Megohms Min.
 - . Dielectrically Withstanding Voltage: 500V AC R.M.S.Min. for 1 minute
 - . Rating Voltage: 30V AC
 - . Current Rating: 1A Max., 10uA Min.
3. Mechanical Specification
 - . Card Insertion Force: 15N Max.
 - . Card Withdrawal Force: 1N Min.
 - . Contact Force : 0.2N ~ 0.6N
 - . Contact Retention Force : 0.3kgf Min.
4. Environmental Specification
 - . Operating Temperature: -20°C ~ + 85°C
 - . Humidity: 10% ~ 95% RH
 - . Resistance To Soldering Heat:
 - Wave Soldering: 245°C 5 Sec Max.
 - Manual Soldering: 360°C 3 Sec Max.
- . RoHS Compliant



Reference P.C.B. Layout(Tolerance: ±0.10mm)

		APPROVED BY VIVIAN		UNLESS OTHERWISE SPECIFIED TOLERANCES ARE .x ±0.38 .xx ±0.25 ANG. ±1°	△5 A5	Marked △5 Was Changed	YUEYU	03/12/2015
		CHECKED BY LYS			△4 A4	Added Dimension	YUEYU	11/04/2010
		DRAWING BY YUEYU			△3 A3	Marked △3 Was Changed	YUEYU	09/15/2010
SCALE	NONE	REV.	A5	UNIT mm	△2 A2	Marked △2 Was Changed	YUEYU	07/27/2010
					△1 A1	Changed Surface State	YUEYU	06/15/2010
					NO. REV.	REVISIONS	CHK	DATE