

# SPECIFICATIONS

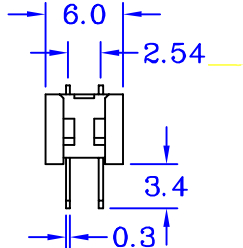
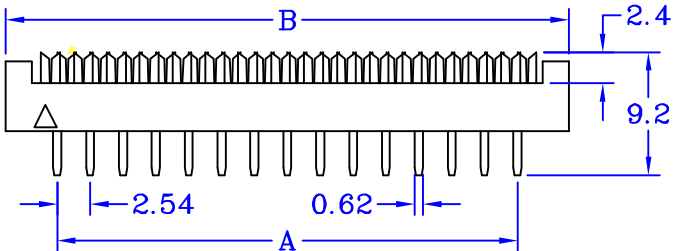
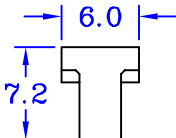
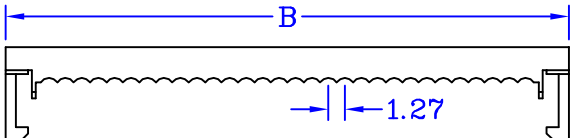
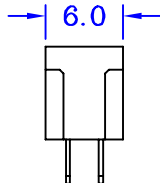
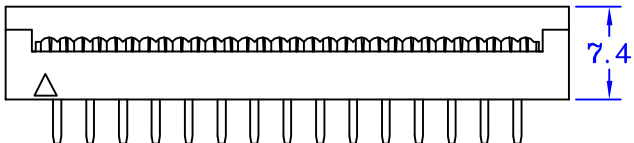
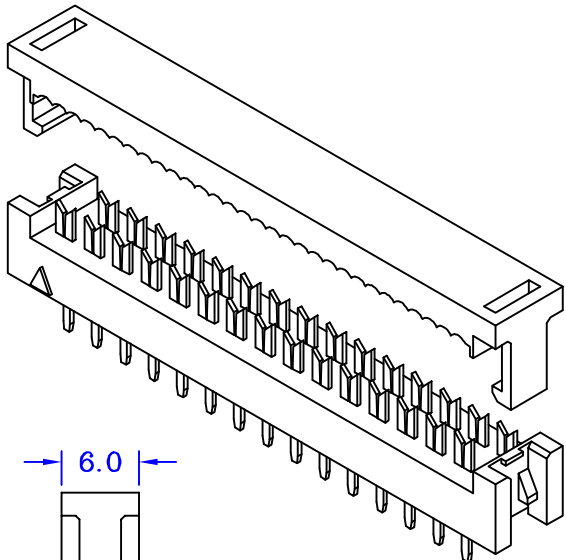
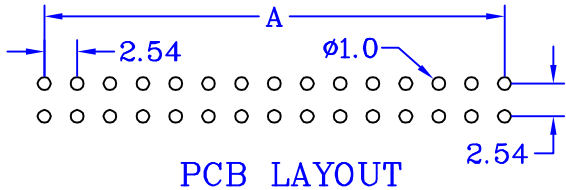
## ELECTRICAL

- Contact Current Rating : 1 Ampere
- Contact Resistance : 20 mΩ Max
- Insulator Resistance : 1,000 MΩ Min
- Dielectric Withstanding Voltage : 500 V AC RMS 60 Seconds
- Cable : Pitch 0.635mm Flat Cable

## MATERIAL

- Insulator : PBT, UL94V-0
- Contact : Brass or Phosphor Bronze
- Contact Plated : Gold Plated Over Nickel
- Solder Area -- Nickel Plated

Operation Temperature : - 40°C to + 105°C



DPGAXXTBI CONTACTS	DIMENSIONS	
	A	B
06	5.08	12.94
08	7.62	15.48
10	10.16	18.10
12	12.70	20.51
14	15.24	23.05
16	17.78	25.64
18	20.32	28.15
20	22.86	30.78
24	27.94	35.86
26	30.48	38.40
28	33.02	40.60
30	35.56	43.50
34	40.64	48.58
40	48.26	56.20
50	60.96	69.00
60	73.66	81.75
64	78.74	86.83

UNIT: mm

繪圖 DRAWN BY  
FUFU  
核對 CHECKED BY  
WENDY

日期 DATE  
2009/02/05  
比例 SCALE  
1:1

**DPGAXXTBI**

圖號 771-XX  
DRAWING NO.