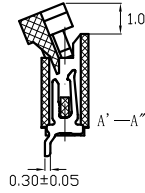
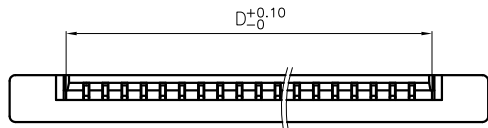
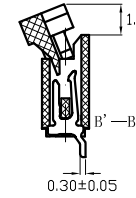
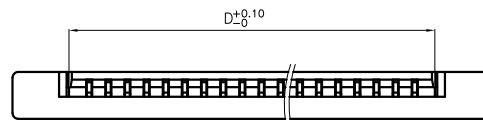


REV.	SPECIFICATION	ECN NO.	APPD.

2434-CxxTD1



2434-CxxTD2



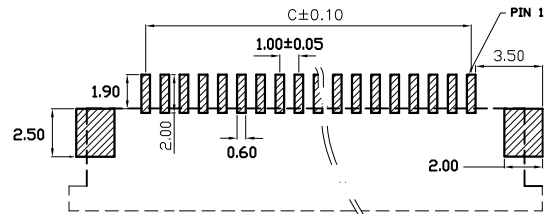
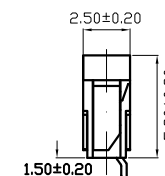
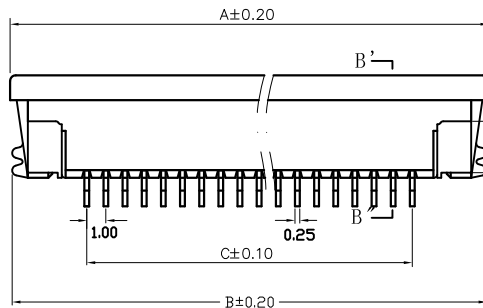
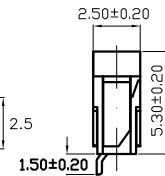
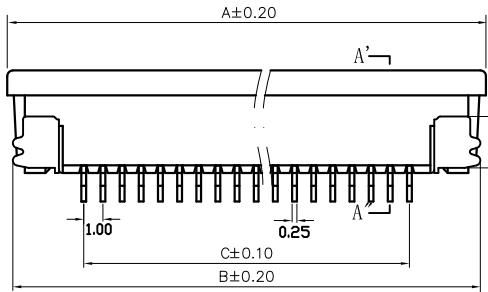
Material:

Housing: High Temperature Plastic UL94V-0.
Actuator: High Temperature Plastic UL94V-0.
Contacts: Copper Alloy.
Leg: Copper Alloy.

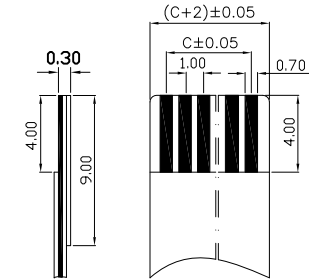
Electrical Characteristics:

Current Rating: 0.5 AMP.
Dielectric Withstanding Voltage: AC 500V. For 1 Minute
Insulator Resistance: 800MΩ min. at DV 500V.
Contact Resistance: 20mΩ max. at DC 10mA.
Operating Temperature: -40°C~+85°C.

***RoHS Compliant**



P.C. Board Layout



SMD Type 1: Top Contact T: Tape & Reel
 Tin Plated 2: Bottom Contact Package
 U: Tube Package

Position	4 Thru 35
Dimension	
A	(No. of PositionsX1.0)+7.10
B	(No. of PositionsX1.0)+6.10
C	(No. of PositionsX1.0)-1.0
D	(No. of PositionsX1.0)+1.3

Tolerances	Drawn No.	2434D02015
x = ±0.5	Projection	
.x = ±0.25	Unit	mm
.xx = ±0.15	Scale	1:1
	Drawn By	Lupa 09/28'10

Title:
 2434 Series
 FFC/FPC Connector
 1.0mm ZIF Type

MCN-1010-0021

SHEET	1/1	Ver.No.	A3
--------------	-----	----------------	----

①570