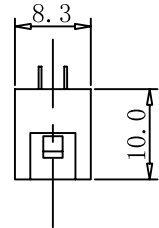
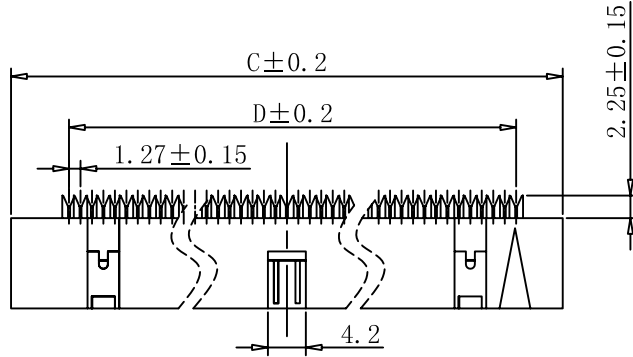
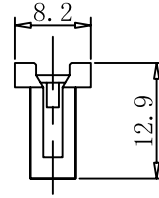
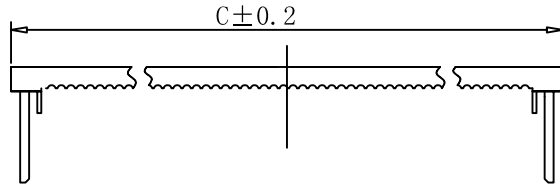
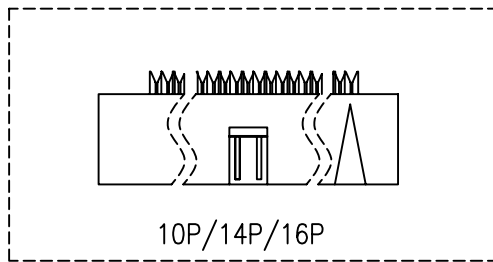
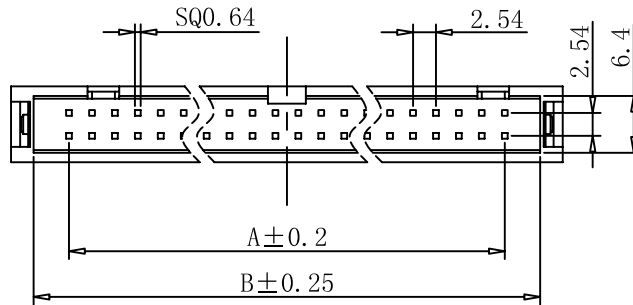
	REV	ECN NO.	MODIFICATION	DATE	DESIGN
	REV	ECN	MODIFICATION	DATE	DESIGN
	REV-1	ECN-1	MODIFICATION-1	DATE-1	DESIGN-1
	REV-2	ECN-2	MODIFICATION-2	DATE-2	DESIGN-2

Material:
 Insulator: PBT+30% Glass Fiber (UL94V-0).
 Contact: Copper Alloy.
 Contact Plated: Gold or Tin over Nickel Plated.
 Gold or Tin over Nickel Plated.
 Specification:
 Current Rating: 1 Amp.
 Withstanding Voltage: AC 500V for 1 Minute.
 Insulation Resistance: 1000M Ω Min. at DC 500V.
 Contact Resistance: 15m Ω Max.
 Operating Temperature: -40° C ~ +105° C.

PIN	A	B	C	D
10	10.16	18.00	23.00	10.16
14	15.24	23.08	28.08	15.24
16	17.78	25.62	30.62	17.78
20	22.86	30.70	35.70	22.86
24	27.94	35.78	40.78	29.21
26	30.48	38.32	43.32	31.75
30	35.56	43.40	48.40	38.10
34	40.64	48.48	53.48	43.18
40	48.26	56.10	61.10	49.53
50	60.96	68.80	73.80	62.23
60	73.66	81.50	86.50	74.93
64	78.74	86.58	91.58	80.01



20P~64P



TOLERANCE: X. X. .X .X .XX .XX .XXX .XXX	TITLE:		TITLE		
	J&W. P/N:				
	CUS. P/N:				
	UNIT	UNIT	DRAW	CHECK	APPROVAL
SCALE	SCALE	DRAW	CHECK	APPROVAL	
PAGE	PAGE	DATE-3	DATE-4	DATE-5	
PATH:					

